



# FA-LA-LA!

The significance of Christmas traditions

BY AGNES AUI

It's the most wonderful time of the year - where everyone is filled with joyous spirits, houses decked in warm decorations and playlists that set the whole vibe of Christmas all month long. There's more to Christmas than gifts and Santa Claus, it's the celebration of the birth of Jesus, commonly known as the son of God. Another thing that makes this holiday stand out is the variety of traditions that Christians adhere to during this time, some of which include carolling, gift giving, setting up a Christmas tree and more. All of these traditions have a meaning behind them and we're here to tell you all about them.



## #1 CHRISTMAS COLOURS

Nowadays, Christmas decorations come in a vast array of colours, allowing people to embellish their homes with colours of the rainbow. However, two main colours still associate with Christmas which are green and red. These colours originated with the beliefs of the pagans and Christians as well. Green, which is typically represented by the Christmas tree and the holly branch, is used to remind people that new life would return once the cold and dry winter months have passed. Red is believed to symbolise the blood that Jesus shed during the crucifixion. The colour can be found in holly berries, Santa's suit and more.

## #2 CHRISTMAS CAROLLING

A Christmas carol is typically a song or hymn with the theme of Christmas, traditionally sung during the days leading up to Christmas and on Christmas day itself. For carols of the French origin, one would hear the term 'noel' (meaning Christmas) often. The lyrics of Christmas carols usually include stories of Christ's birth, sung in a language that audience could easily understand, allowing Christians to evangelise. These carols are also sung during Christmas services in churches before the preaching of the Word. Examples of popular Christmas carols include O Come All Ye Faithful, Joy To The World, Hark! The Herald Angels Sing, and more.

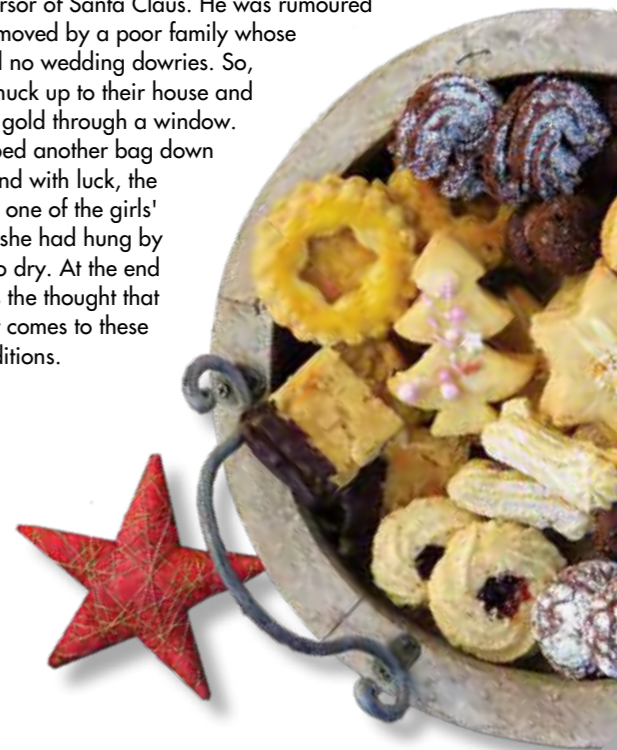
## #3 CHRISTMAS TREE

Trees that are commonly used as a Christmas tree is the evergreen fir tree, although for those of us who are celebrating this festive season in tropical countries, we're used to setting up fake trees instead. The history behind setting up a Christmas tree started in the 16th century, when German Christians brought the evergreen fir trees into their homes as a symbol of everlasting life during the cold winter season. And apparently when people found out that Queen Victoria had her German husband Prince Albert set up a Christmas tree in their palace, the practice became the peak of interior design in Western countries and now, all over the world.



## #4 CHRISTMAS STOCKINGS

On Christmas Eve, stockings (typically sock-shaped bags) are hung at home to be filled with candy or other small gifts, supposedly when Santa arrives. Nevertheless, the concept of hanging up Christmas stockings apparently originated with the precursor of Santa Claus. He was rumoured to have been moved by a poor family whose daughters had no wedding dowries. So, one day, he snuck up to their house and threw bags of gold through a window. He then dropped another bag down the chimney and with luck, the bag landed in one of the girls' stockings that she had hung by the fireplace to dry. At the end of the day, it's the thought that counts when it comes to these Christmas traditions.



## #5 CHRISTMAS PRESENTS

Gift giving is one of the most prominent traditions when it comes to celebrating Christmas. Most of us are familiar with the tradition of buying someone a gift, placing it under the Christmas tree and unwrapping it first thing in the morning. However, the practice of giving gifts actually started when the three wise men brought gifts to baby Jesus after he was born. Gift giving also signifies the gift of God to Christians - when He sent His one and only son (Jesus) to Earth to die for the people's sins. Though overall, giving presents to family and friends represents our thoughts and love for them during the joyous occasion.