



KL Lifestyle Art Space
Modern & Contemporary Art Gallery
150, Jalan Maarof, Bukit Bandaraya, 59100 Kuala Lumpur
Tel: +603 20932668 | +603 20942668 Fax: +603 20936688 | Website: www.kl-lifestyle.com.my/artspace
Sales and Enquiries: +6019 3337668

The Faces of Abstraction A Solo Exhibition by Nizar Kamal Ariffin

KL Lifestyle Art Space @ Jalan Maarof



The Faces of abstraction

Nizar Kamal Ariffin

Nizar relentless search for truth and the meaning of life, create relentless in his soul which he channeled as passionate energy to paints. Producing vigorously, he sculpts the surface with his agile yet meticulous stroke. His hand twist and turns like move from a martial arts master. Nizar is perfectionist, with his high finished surface, he managed to portray sensitivity and responsive towards life. He first 'The Topeng' or mask 1998 was a prelude to his acquired self.



About KL Lifestyle Art Space

Datuk Gary Thanasan

Chief Executive Officer of KL Lifestyle Art Space

.....

KL Lifestyle Art Space's chief goal is to offer another avenue for the local public and visitors to view Modern and Contemporary artworks from Malaysia and the region beyond the institutions and existing art spaces. We have been fortunate to have secured a couple of prime locations in the Klang Valley: on the ground floor at Tropicana City Mall in Petaling Jaya and the ground floor of 150, Jalan Maarof, Bukit Bandaraya in Kuala Lumpur. KLAS' visibility is high and its accessibility at both locations will no doubt encourage many walk-ins, thereby raising public awareness of Modern and Contemporary Art.

The Malaysian visual art scene is growing rapidly. However, we believe more needs to be done to propel it to the same heights as many of our Asian neighbours, such as China, India, Indonesia and even Thailand. It is KLAS' intention to bring the country's visual art scene one step closer to or, even, one step ahead of those of our neighbours. *Our Being*, a solo exhibition by Jeihaan Sukmantoro, a highly reputable senior artist from Bandung, Indonesia, marks KLAS' foray into promoting artworks by renowned artists from the region.

As a commercial gallery space, we hope to encourage a secondary market for Malaysian art, particularly for Modern or pioneer works from established senior artists and masters from Malaysia and the region. These chiefly constitute artworks created up till the 1960s and many will be surprised to know that these artworks, as well as artworks by these pioneering artists, are still attainable at relatively affordable prices.

KLAS will also provide the service of receiving consignments from artists or individual collectors, thereby making their artworks available to interested parties. This will no doubt increase the chances of serious collectors acquiring those hard-to-secure pieces from specific periods, series or individuals and in the process encourage fresh, young collectors.

All art collections have to begin somewhere. What matters most is the steps that follow and, as all serious collectors know, it is important to deal with a reputable source. KL Lifestyle Art Space offers an assurance of legitimacy for all the artworks that pass through our doors. Acquisitions made through KLAS will come complete with a certificate of authenticity bearing the original signature of the artist. If it is a posthumous work, then a guarantee of authenticity will be made through an appropriate governing body for a token sum.

KLAS has its presence on the Internet too, a comprehensive website at www.kl-lifestyle.com.my/artspace that details previous and on-going exhibitions and which includes a stockroom with an inventory of artworks for sale.

We look forward to seeing you at KL Lifestyle Art Space.

Datuk Gary Thanasan

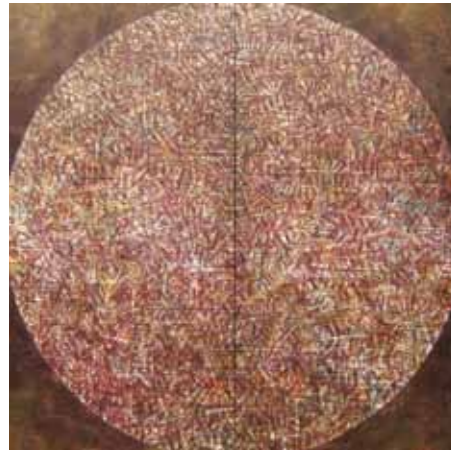
Chief Executive Officer of KL Lifestyle Art Space

Nizar Kamal Ariffin



Faces and Faces - Siri Dunia Al Wahid, 2010
127 x 127 cm Oil on Canvas

(Private collection)



Faces and Faces - Siri Dunia Flow, 2010
197 x 197 cm Oil on Canvas

(Private collection)

Like a true martial art master, Nizar manages to portray sensitivity and is responsive towards life using his unique agile skills from hand-twisting and various other moves to produce meticulous strokes of art to sculpt surfaces.

Who, What, Why, When and How? Nizar, the Pondering Mask man's 'Topeng' 1998 questions about the truth and the meaning of life through squares and circles, reflecting fairness and balance in life without having any relation to religion, ritual or ethnic culture on the mask.

Born on September 9, 1964 in Kuala Lipis, Pahang, Nizar Kamal Ariffin first started out painting while working with the Ministry of Culture and Youth before being appointed as their resident artist at Taman Seni Budaya Pahang.

His passion for painting was first provoked by his relentless soul-searching journey which is depicted through his artworks of inner beauty of time, space and mass.



Mascara Series, 2003
82 x 82 cm Acrylic on Canvas

(Private collection)

Like a true martial art master, Nizar manages to portray sensitivity and is responsive towards life using his unique agile skills from hand-twisting and various other moves to produce meticulous strokes of art to sculpt surfaces.

He graduated in Fine Arts and Graphics from Universiti Sains Malaysia, Nizar and had experience freelancing in graphic and paint works before moving to Kuala Lumpur in 1993 where he painted at APS (Angkatan Pelukis SelMalaysia), Central Market. He eventually became a full-time painter at the Conlay Artist Colony, Malaysia Craft Complex in 1998.



Mascara, 1999
82 x 82 cm Oil on Canvas

(Private collection)



Siri Pohon Beringin - Daerah # 1

Acrylic on canvas

100 x 100 cm

2012

(Private collection)



Siri Pohon Beringin - Daerah # 9

Acrylic on canvas

127 x 157 cm

2012

Private collection



Siri Pohon Beringin - Daerah # 10

Acrylic on canvas
137 x 167 cm
2012



Siri Pohon Beringin - Daerah # 11

Acrylic on canvas
152 x 152 cm
2012



Siri Pohon Beringin - Daerah # 12

Acrylic on canvas
152 x 152 cm
2012



Siri Pohon Beringin - Daerah # 13

Acrylic on canvas
152 x 152 cm
2012



Siri Pohon Beringin - Daerah # 14

Acrylic on canvas
137 x 137 cm
2012



Siri Pohon Beringin - Daerah # 15

Acrylic on canvas
137 x 137 cm
2012



Siri Pohon Beringin - Daerah # 16

Acrylic on canvas
137 x 137 cm
2012



Siri Pohon Beringin - Daerah # 18

Acrylic on canvas
91 x 122 cm
2012
(Private collection)



Siri Pohon Beringin - Daerah # 22

Acrylic on canvas

217 x 217 cm

2012



Siri Pohon Beringin - Daerah # 23

Acrylic on canvas

217 x 217 cm

2012



Siri Pohon Beringin - Daerah # 24

Acrylic on canvas
137 x 137 cm
2012



Siri Pohon Beringin - Daerah # 27

Acrylic on canvas

217 x 217 cm

2012



Siri Pohon Beringin - Daerah Dunia

Acrylic on canvas
152 x 152 cm
2012



Siri Pohon Beringin - Tumbuh

Acrylic on canvas
137 x 137 cm
2012

Biography

Nizar Kamal Ariffin was born in September 9 1964 in Kuala Lipis Pahang, in 1984 saw Nizar with SENIKA , the state of art society in Kuantan Pahang. Started painting while working with Ministry of Culture and Youth and was appointed as their Resident Artist at Taman Seni Budaya Pahang. In 1986 Nizar pursue his studies in Fine arts and Graphic at Universiti Sains of Malaysia. He started painting seriously after graduation. He moved to Kuala Lumpur in 1993 and paint at the Central Market at the APS (Angkatan Pelukis SeMalaysia) house while freelancing mainly in graphic and print works. Nizar plunged into painting full time and eventually joined the Conlay Artist Colony at Craft Complex Malaysia in 1998.

Nizar relentless search for truth and the meaning of life, create relentless in his soul which he channeled as passionate energy to paints. Producing vigorously , he sculpts the surface with his agile yet meticulous stroke. His hand twist and turns like move from a martial arts master. Nizar is perfectionist , with his high finished surface, he managed to portray sensitivity and responsive towards life. He first ' Topeng' or mask 1998 was a prelude to his acquired self.

Working only on square format the symbolize fairness and round circles reflects of balance in life . his mask have no relation either towards religion, ritual or ethnic culture. Mask as a mask, the answer to his unending quest of Who, What , Why , When and How. To Nizar , "the process of searching is not unravelling the truth or untruth , conscious and consciousness is the way to self-revelation. Most of my works is to search soul to through the purest inner sense. Life is life, full of beauty, suffering and secrets, it is the inner beauty of time, space and mass. Nizar , the Pondering Mask man.

Selected Exhibition

- 1985 : Senika – Hyatt Kuantan Pahang
- 1985 : WWF – DBKL Kuala Lumpur
- 1986 : Menifestasi "3P" – Kuantan Pahang
- 1986 : Inspirasi Seni – Museum USM Penang
- 1987 : Aspirasi Seni – Museum USM Penang
- 1988 : Historical of Pahang – Museum Pekan Pahang