



The World of  
**David Bromley**

Presented by



Supported by



Partners



Organised by



KL Lifestyle Art Space  
Modern & Contemporary Art Gallery  
31 Jalan Utara, 46200 Petaling Jaya, Selangor  
Tel: +603 7932 0668 Fax: +603 7955 0168 [www.kl-lifestyle.com.my](http://www.kl-lifestyle.com.my)  
Sales and Enquiries: +6019 333 7668

# The World of **David Bromley**

First Edition, 2017

Published in conjunction with  
"The World of David Bromley" at KLAS.

All rights reserved. No part of this publication  
may be reproduced or transmitted or published,  
in any form or by any means whatsoever,  
without permission.

Published by Mediate Communications Sdn Bhd  
31 Jalan Utara, 46200 Petaling Jaya, Selangor.

8 August - 30 August 2017

KLAS @Jalan Utara

# Message

BY THE AUSTRALIAN HIGH COMMISSION, MALAYSIA

The Australian High Commission, Malaysia is pleased to commemorate David Bromley's first solo exhibition in Malaysia, with this special publication.

David Bromley is one of Australia's most celebrated contemporary artists, with his work having been exhibited widely across Australia and internationally.

Well known for his imaginative and original style, Bromley's unique depictions of people and nature, with their exuberant colours and bold lines, are sure to delight Malaysian art aficionados and his portraits of Malaysian subjects, which have been commissioned especially for this exhibition, will add a personal touch to the series.

Australia and Malaysia share a vibrant tradition of artistic exchange. In fact, it was an Australian – Frank Sullivan – who co-founded the Malaysian Arts Council in 1952. Sullivan was the Press Secretary to the first Malaysian Prime Minister, Tunku Abdul Rahman, and played a crucial role in the early development of Malaysia's art scene, including the creation of the Malaysian National Art Gallery in 1958.

Sullivan's legacy lives on through the strong relationship between the Australian and Malaysian creative communities, a relationship exemplified by collaborations such as this, which the Australian High Commission is proud to support.

As a firm believer in the power of art to bring people together, the Australian High Commission, Malaysia applauds KL Lifestyle Art Space's initiative to bring 'The World of David Bromley' to Malaysia. We are sure the exhibition will be a great success and look forward to seeing Mr Bromley's work inspire new audiences and foster greater understanding between our two nations.

# From The Desk

OF THE PRESIDENT & CHIEF EXECUTIVE OFFICER  
ECO WORLD INTERNATIONAL BERHAD

Warm greetings from Eco World International.

It is with great pleasure that we collaborate with KL Lifestyle Art Space (KLAS) as the Main Presenter for Australian artist David Bromley's inaugural exhibition in Malaysia. We look forward to treating art lovers to more pieces from the artist's collection at the special showcase at our very own Eco World International gallery in Kuala Lumpur.

While this is our first partnership with KLAS, arts and culture has always been a strong point of interest for us at Eco World International. For our maiden venture in the United Kingdom – London City Island in Leamouth Peninsula, we worked together with Ballymore Group to infuse the development with the vibrancy of East London's famed arts scene.

As a creative hub, residents of London City Island will be able to enjoy contemporary living amidst the cultural energy of film, dance and art. We are proud to house one of London's most treasured artistic institutions, the renowned English National Ballet, and also world-leading film conservatoire, the London Film School at London City Island.

To add on to the buzz at London City Island, we've embarked on a partnership with The Line, London's contemporary art walk to develop and deliver public art commissions as a permanent feature of the development. The Line will also establish an artist-in-residence programme, occupying studio space in London City Island and a space where people can meet and view exhibits.

For Eco World International, coming in as the Main Presenter for David Bromley's Kuala Lumpur exhibition is an opportunity for us to connect Malaysia to Australia; Kuala Lumpur to Melbourne. This is particularly meaningful for us as David Bromley's home base in Melbourne is also where our upcoming Yarra One residential development is situated.

Yarra One is located in South Yarra, a suburb of Melbourne that houses some of the city's most prestigious residential addresses. It is also nearby Chapel Street and Claremont Street, lifestyle destinations known for culinary indulgences, fashionable boutiques and artisanal products.

Designed by the award-winning Fender Katsalidis Architects, the 26-storey Yarra One brings a breath of fresh air to the neighbourhood with its open-air atrium on the street level and spectacular views of Melbourne's central business district from its exclusive residents-only rooftop terrace.

For a discovery of Yarra One, we invite you to visit us at the Eco World International gallery in Kuala Lumpur, or if you're in the world's most livable city, drop by the Yarra One gallery for a personal introduction.

Thank you.

*Dato' Teow Leong Seng*



# Foreword

BY THE CHIEF EXECUTIVE OFFICER  
OF MEDIATE COMMUNICATIONS SDN BHD

My love for art developed whilst being a student in England in the early 90's. I am still unsure if I was drawn to art in my early twenties during my time there due to loneliness of being away from home or that the natural interest for art just came about as I was being exposed to the English (and European) landscape, architecture, heritage and great history.

After having owned numerous generic prints of artworks by Monet, Van Gogh and many other European impressionists purchased at flea markets during my student days (which eventually ended being hung on the walls of my first home purchased in 1994), led me to discover the beauty of the artworks produced by our very own master artists in Malaysia.

Today, I am a student of art with no intention of painting but just wanting to gain as much knowledge as I can on Malaysian art, and art from the region as a gallerist. They say in life; either find your way, or make one. So I did exactly that and went ahead to make art a business which resulted in me being a gallerist and patron of the arts which enabled me to share and promote the works of not just one, but many great artists from the beautiful and vibrant Malaysian art world.

I have, over the past six astounding years in the art business, developed relationships with numerous great Malaysian senior artists who have today become my source of inspiration. I admire their willingness to share most importantly their wisdom, and along the way, the technical aspects of their art and the craft involved in creating it.

As a gallerist, communications with art lovers showed the various trends in art collecting and gave me better depth and insight into running the business. I am proud to profess that art is a part of me and KLAS is an extension of my passion. Despite it being a young gallery, it has taken giant strides in the Malaysian art landscape. Within this short time frame, we have proudly showcased 16 exhibitions and 28 hugely successful art auctions thus far.

Our current and seventeenth exhibition is an exciting one, and the first of its kind. This exhibition showcases the works of an artist from the beautiful continent, which I have recently come to love; Australia. Art is a medium that brings people together. That being said, my family vacation to Melbourne in December 2016 led to my meeting with David Bromley, and now this historic exhibition.

Before having met David, I only had the opportunity to see his beautifully distinctive artworks in books, and in numerous auction catalogues by the leading auction houses in the world. David is probably one of the most interesting artists I have ever met. David exudes charm, energy and creativity in everything he does and is really an interesting person to talk to (a good listener too as I do tend to talk a lot). This great man remains down to earth despite his huge success as a leading contemporary artist in Australia. We are truly honoured to be hosting his inaugural solo exhibition in Malaysia, 'The World of David Bromley'.

David is renowned for his ever popular nude series, endearing children series, and eye-catching world series. This exhibition will haughtily showcase over 60 of David's works; paintings and sculptures alike.

David's solo exhibition is an effort of ours to introduce one of Australia's gems and immerse art aficionados and all of you into his vibrant and fascinating world as he expresses it through his art.

Our sincerest appreciation to our main presenter, Eco World International for kindly accepting to be a part of this landmark exhibition with David Bromley, and the start of a long and exhilarating collaboration with KLAS. Special mention also goes to the Australian High Commission Kuala Lumpur, Wolf Blass, San Francisco Coffee and Aaroma for their support.

Enjoy our seventeenth exhibition; 'The World of David Bromley' and we look forward to your company along our very exciting journey.

Thank you.

*Dato' Gary Thanasan*



# 6 KLAS CELEBRATES ASTOUNDING YEARS

---

## KLAS ART AUCTION

MALAYSIAN MODERN & CONTEMPORARY ART



**ABDUL LATIFF MOHIDIN** Siri Pago-Pago, 1963 Oil on canvas 87 x 78 cm  
**PRIVATE COLLECTION OF DATUK GARY THANASAN**  
(Formerly in the Private Collection of Datuk Syed Ahmad Jamal)





Contents

About David Bromley	12
Girls from Around The World Series	18
Children Series	33
World Series	45



# The World of **David Bromley**

David Bromley, one of Australia's finest self-taught artist adds to his decorated belt of accomplishments by having his very first solo exhibition in KL Lifestyle Art Space, Malaysia. This exhibition will feature 60 of his iconic works. These works have elements of Bromley's style that many have, and you will too, come to love.

## Background

Born in 1960, in Sheffield, England, to a Dutch mother and an English father Bromley went to Australia in 1964, a Dutch English boy in a new frontier.

"I was always an outsider, yet I loved it and still do. It was the sun, the surf, and my rough and tumble crew of mates that built the rebel in me," he said in his email reply. It was during his 20s when he started to think more about what he was going to do with life. He decided to move to the coastal town of Noosa. It was here where Bromley developed his passion for art, as well as surfing.

It was during his 20s when he was wandering about, wondering what to do with himself and in life. Then, he made a decision to move to Noosa where he developed a passion for surfing, as well as for art.

After many years in the twilight zone – out of work and out of reality – David, in his mid-twenties found meaning and art. "I decided to do everything in my power to reinvent my life. Surfing was a way to look after myself more and to engage in the physical," he says. Art, for Bromley, was more on the mental side: it was an outlet to express himself from the chaos that was his mind. Initially, it was in Adelaide where Bromley learnt how to throw clay on a wheel and soon after, he decided that he found his true calling as an artist. From



clay, he was led to the medium of paint, which he subsequently fell in love with. The transition of mediums did take a couple of years for Bromley to adapt to, but he came out triumphant as a self-taught artist.

"Paint was my saviour and art is (apart from love of my family) my passion," he said. And his fervour has garnered him profound success, from granting him the opportunity to re-imagine and recreate key works of the venerable master artist, Charles Blackman, one of Bromley's childhood heroes, to being one of Australia's most eminent and commercially popular artists. His artworks are among the most saleable in the country, a notable accomplishment by this prolific artist.

For Bromley, it has always been art, love, family, and work, work, work!

"At 56, I am young and have a determination to grow, to seek, to challenge," he added.

## Artwork

Every work done by an artist is an expression of their souls and for the past 20 years, Bromley's artworks have expressed just that. His works have reaped widespread acclaim and notoriety in Australia and internationally. He has exhibited his masterpieces on nearly every continent including Asia, Europe, Africa and America.

He once said that, "When I am in the studio, my mind and my brush travels through my imagination and I am in a place my dreams take me." It is also through the creative lens of art and painting that all the characters and subjects from his works can still be portrayed from the garden of Bromley's mind.

The artist refers to his works as 'pop sensibility'; it includes a love of fond images, photographic sources and mass media references. Bromley's artworks revolve around three distinct themes: the first, being nude female portraits, the second, his children series, and third, his exploration of the world as we know it. His artworks portray his unique style of painting in which he explores various mediums that result in whimsical fruition. Bromley's work is enduringly figurative, daringly coloured and executed with a graphic intention that is both striking and memorable.

He tends to focus on nudes and images of childhood adapted from the world of 1950s book illustrations. These are combined with an inventive relish for the effects of paint. One would say that Bromley's niches in figurative painting are the subject's eyes and lips. He manages to capture every detail and sparkle, thus, it is the first thing one notices about his portraitures. There are a couple of his portraiture paintings that is illustrated by three stripes, the first stripe, Bromley explained, are typically around the eyes, with intent to highlight the eyes as they are the window to the soul. Bromley's method of painting the female form involves taking about 200 or more pictures of the subject, which he deems necessary as it comes down to a fleeting moment where the subject is aesthetically impeccable, thence depicted in his paintings.

Delving into his children series, Bromley’s collection portrays an image of childhood, carrying us back to the land of lost content, to a world of action, dreams, of energy and reverie, of present pains and future hopes. This series typically revolves around the imagery from ‘Boy’s Own Annuals’ (vintage book) and old magazines, and explores the themes of childhood innocence, lost and found. They are direct and immediate in their appeal – like children. They are mysterious and allusive and indirect – like children.

Bromley’s routine has extended to significant work in sculpture, creating in both bronze and resin to bring to life the characters imbued within his paintings. Through most of his sculptures, Bromley captures the playful and carefree essence of being children and their spirited shenanigans through immaculate details of their body language and facial expressions.

### *The World of Bromley*

KL Lifestyle Art Space is privileged to be showcasing David Bromley’s first ever exhibition in Malaysia. We have freshly discovered that his world is a vibrant, colourful and an ingenious one. He has embodied art in its true sense. His works are not confined to paintings and sculptures, rather, it has extended to all realms, from fashion (accessories included), interior designing to architecture. This is evident by his gallery in Melbourne. You would be greeted by massive sculptures of his whimsical children series such as elephants, bears and rabbits. Then, you would also find Harley Davidson motorcycles that have been customised by Bromley himself, which he often uses to cruise around town. The walls of his gallery are adorned by portraits of his nude series (the best-seller being ‘Rosie’), artists he admires such as George Foxhill and works from his collaboration with one of Australia’s celebrated artist, Charles Blackman. If you look up towards the ceiling, Bromley has also painted on the ceiling fan as he believes that everything should be out of the ordinary, just like himself.

Just a little further into the suburbs of Melbourne, a solemn old Victorian structure stands the frame of Bromley’s studio, where he has meticulously pervaded its spaces with his artwork and beloved sculpture collections. Having immortalised himself into his workspace, this hallowed building truly is, a sight to behold. Bromley has always loved dramatic interiors that tell a story. He is a fan of the formal constructs of the Victorian era, thus the buildings that he selects to house his works and his family. Stunning is a humble word to depict the splendour of his studio. Endless hallways snake about the building, occasionally breaking into several rooms housing spectacular art pieces, unique furniture and antiques Bromley adores. Each room demands that you take pause and absorb the art and culture Bromley has incorporated within the space, with mindful touches of his personal flair. His prime choice of colours, orange, red and blue, can be seen dominating most of the space, demonstrating Bromley’s genuineness and true personality that he painstakingly infuses into the walls of his studio. When asked his favourite surroundings while he paints, he answered love. Being surrounded by warmth and endearment is where his work manifests at its best. Family, friends and music are essential elements contributing to Bromley’s greatest creations and he’s not hesitant to give them credit.

Apart from Bromley’s domain in the city, he also owns another phenomenal gallery in the quaint town of Daylesford. This unassuming building appears tiny at the entrance, but akin to a river mouth, it swells out into an ample space of furniture, Chinese figurines and more antiques. Bromley’s line of accessories and ceramic works dwells safely and boastfully in glass showcases along the gallery. This intricately decorated space, though extremely fascinating, does not stay as it is for long periods of time. It is ever evolving as Bromley’s flow of fresh ideas flood his gallery with continuous transformations from rudimentary ones like a shift of



UNTITLED  
Mixed media on canvas  
42 x 60 cm • 1988

colours and décor styles, to more complex altercations on even the fundamental structures of the gallery such as the breaking down of walls and creation new holes and spaces. One will never be jaded strolling around the art-enveloped walls of Bromley’s gallery. In addition, his recent venture of the Bromley empire is further up Daylesford, in the town of Ballarat. Bromley and his wife, Yuge’s habitual commute between Melbourne and Daylesford led them to discover the charming, Ballarat town. Bromley’s affinity for formal constructs of the Victorian era resulted in him purchasing the magnificent Royal Highlander building. Currently named as the Ballarat Hotel, this establishment was formerly known as the Peter Laylor building while its former incarnation was known as the Royal Highlander Inn. This old-world building is scheduled to open soon, offers accommodation, a bar and a gallery to saunter into. Bromley had mentioned that they (David and Yuge Bromley) purchased the former watering hole after deciding they wanted to raise their children in Ballarat. The ground floor of the building is devoted to a bar and a dining area where patrons will be able to order light meals to go along their libations. Upon progression towards the first floor, the stairway is colourful and energetic, illustrating Bromley’s nature series and transporting to rooms with distinctive interior. The idea behind this venue is to provide guests with an outlet to experience culture at its best.

### *Bromley and KLAS*

Dato’ Gary Thanasan, Chief Executive Officer of KL Lifestyle Art Space came across Bromley and his studio in Melbourne,





Australia. In a recent interview for KL Lifestyle Art Space, Bromley related, “I believe that people of creativity and like-mindedness attract each other like magnets; that is how Gary and I met.” Bromley related that he promptly felt a connection with Dato’ Gary Thanasan, on a creative level and admired his eye for art. Yuge Yu, Bromley’s wife also mentioned, “We appreciate and love art aficionados who look in every nook and cranny of our studio or gallery for artworks. Those are the kind of people we instantly get along with. Gary did just that so there is no surprise why we are collaborating with him.” Bromley further enlightened us that though many had asked him to collaborate with them, however, the deal breaker was their negative personality and energy. A humble man, Bromley favours working with people whose dispositions or traits are similar to his because collaborations and his artworks are at the end of the day, an extension of himself.

### Exhibitions

David Bromley has collaborated with countless restaurants, product brands, celebrities, fashion lines, and of course galleries, producing fine works that add vigour to his portfolio. The world is no stranger to Bromley’s art. His works have hung on walls and graced the rooms of esteemed galleries, from LA to Singapore and all the way to Xia Men, China.

A mobile stage built in Sydney alongside Design EX, Potato Head Folk Singapore housing the creative works of Bromley & Co, and collaborating with Guerrilla Atelier, LA for an enigmatic fusion of his art with their fashion are just a handful of Bromley’s honourable mentions.

Besides all that, Bromley has birthed new retail clothing concepts with his paintings for Kookai, designed murals for Sheraton & Rae’s on Wategos as well as for Fitzroy Social at Collingwood, collaborated on work with acclaimed artist Charles Blackman (an artist Bromley reveres and admires) in Australia, designed for Wolf Blass, worked multiple times with Dulux, once during their Colour Awards, and the long list goes on. One final mention would be of his contribution of portrait paintings at the LA Women Show, each model displaying their own beauty, style, and grace within each canvas, captured eloquently by none other than David Bromley himself.

To add to his recent decorated belt of achievements, Bromley is having his inaugural exhibition close to home, in our very own KL Lifestyle Art Space, Malaysia. This marks his first solo exhibition in the country. KL Lifestyle Art Space is proud to be hosting the artist’s exhibition from June 29th to July 19th, exhibiting more than 60 of his precious collections, comprising of paintings and sculptures.

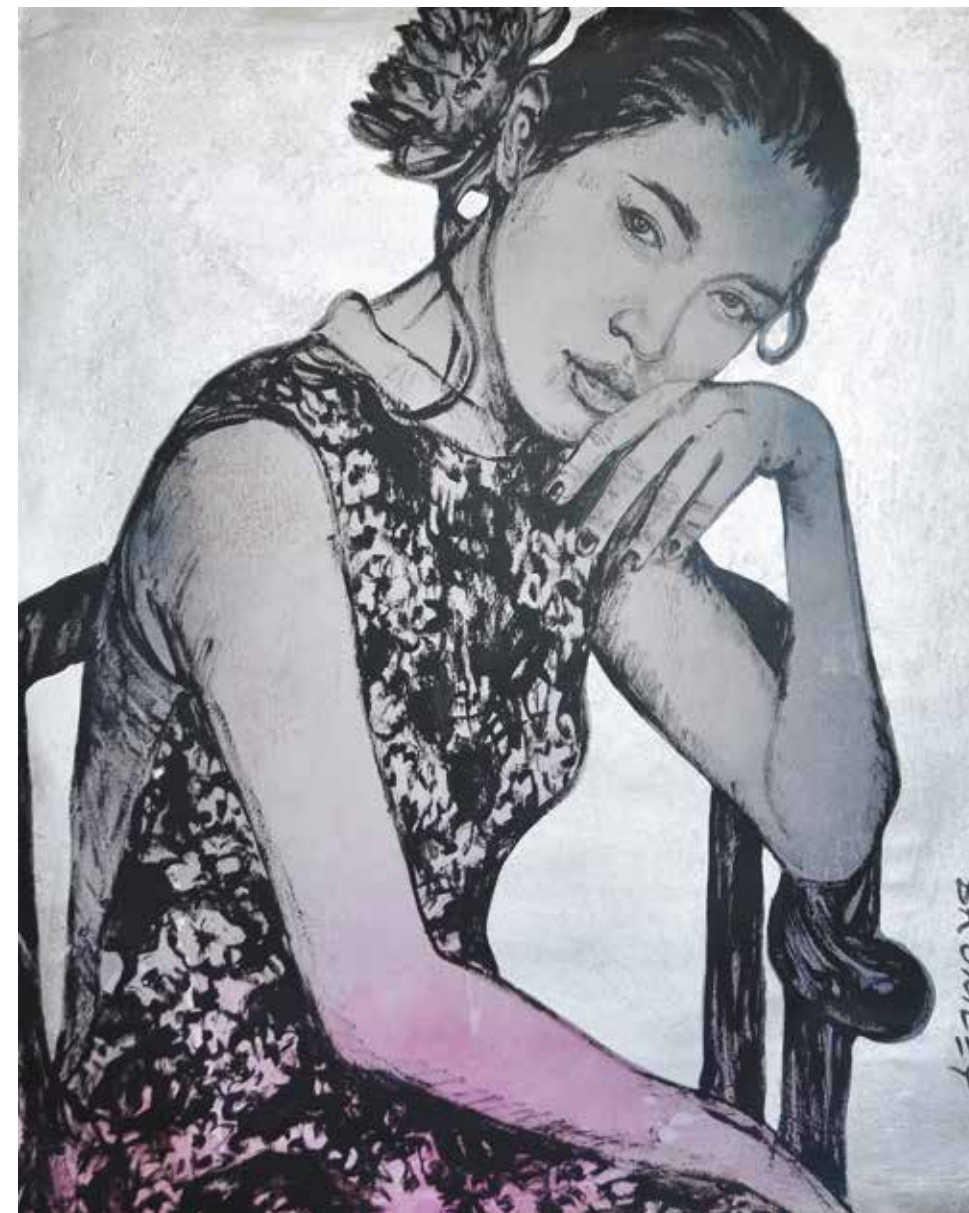
His trademark theme, the children series, will illustrate local subjects, to add a Malaysian flavour to the series. However, the limelight of the event for KL Lifestyle Art Space is something near and dear to us; it is the commissioned paintings of KL Lifestyle Magazine’s selected cover girls, Amber Chia, Tengku Chanela Jamidah and Sheena Liam to name a few.

David Bromley is an extraordinary artist with his own style and through his artworks work, engaging his audience to relate, to feel, alongside him, through his paintings, through his sculptures and ultimately, through his eyes.





*Girls from  
Around The World*



AMBER  
(KLL Cover February 2017) • Acrylic on canvas with metal leaf gilding  
150 x 120 cm • 2017





CHANELA  
(KLL Cover July 2015) • Acrylic on canvas with metal leaf gilding  
150 x 120 cm • 2017

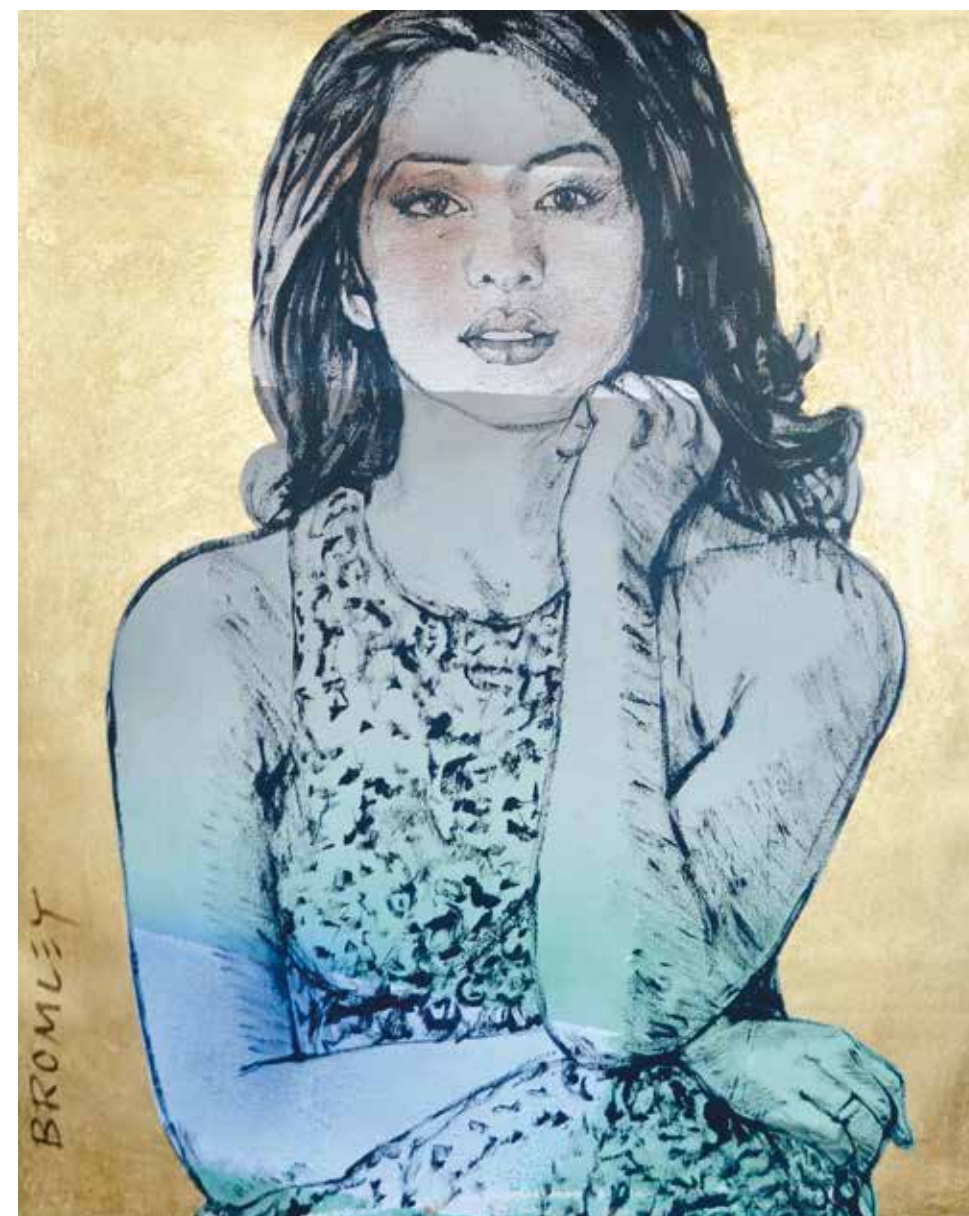


JEZAMINE  
(KLL Cover May 2015) • Acrylic on canvas with metal leaf gilding  
150 x 120 cm • 2017





NAJWA  
(KLL Cover February 2015) • Acrylic on canvas with gold leaf gilding  
150 x 120 cm • 2017



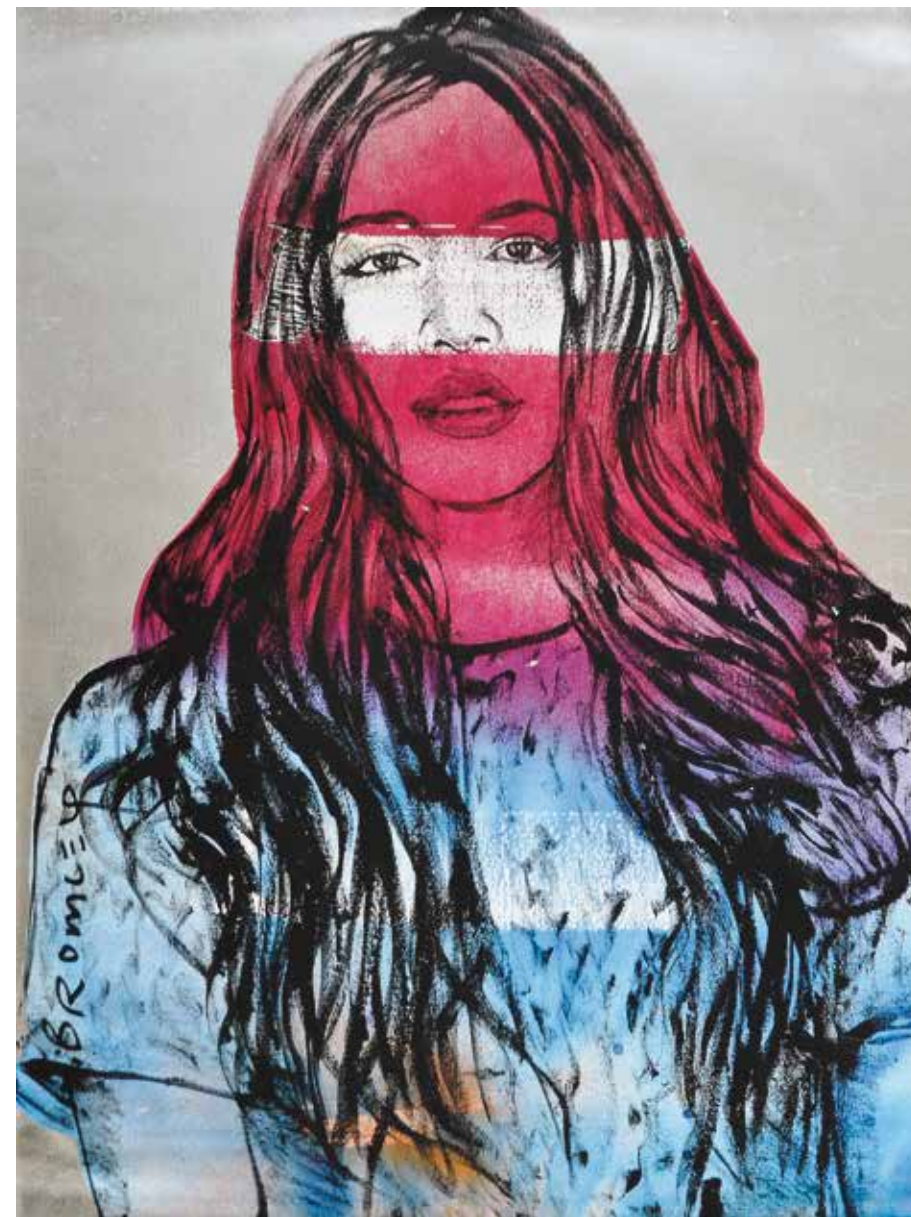
SARAH  
(KLL Cover December 2015) • Acrylic on canvas with gold leaf gilding  
150 x 120 cm • 2017





SHEENA

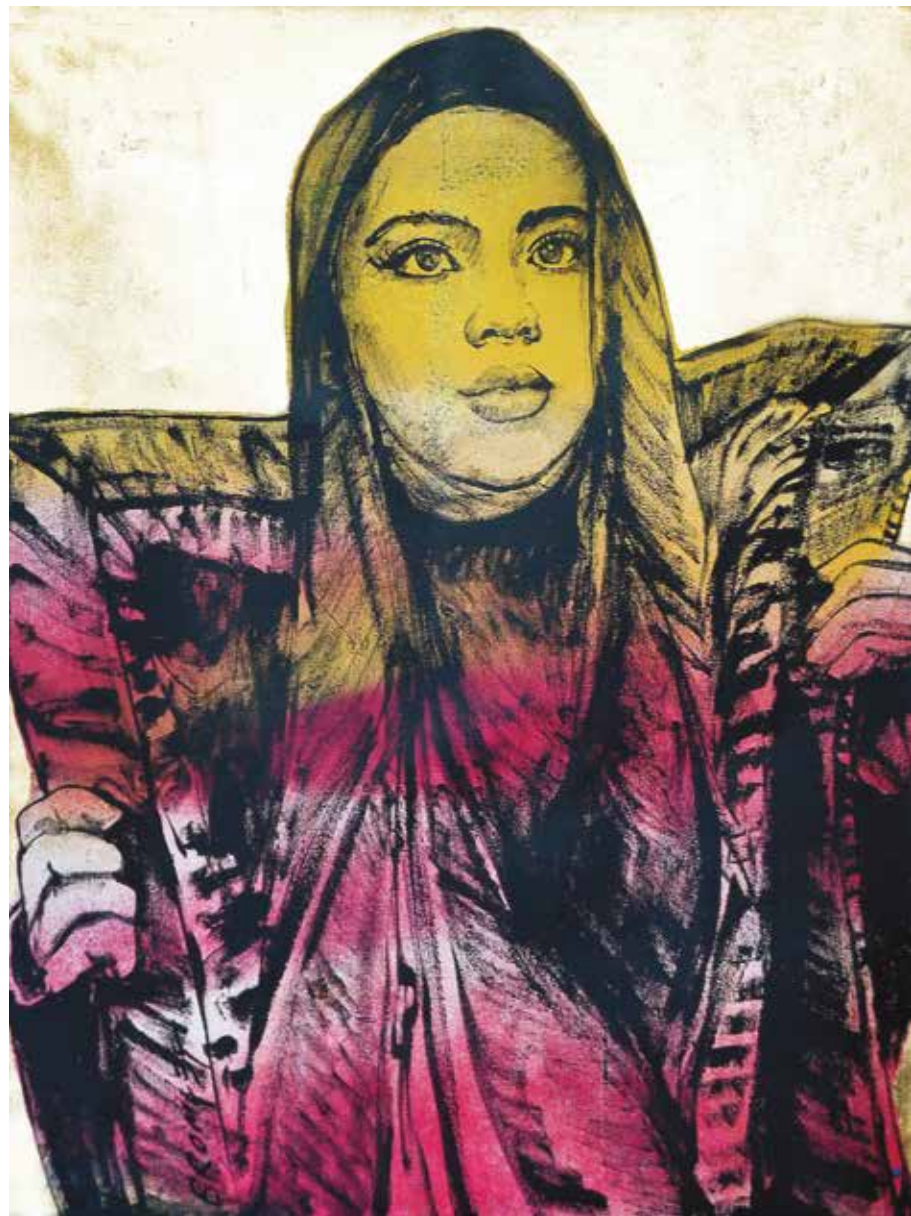
(KLL Cover February 2014) • Acrylic on canvas with gold leaf gilding  
150 x 120 cm • 2017



CHANELA

(KLL Cover July 2015) • Acrylic on canvas with metal leaf gilding  
120 x 90 cm • 2017





NAJWA  
(KLL Cover February 2015) • Acrylic on canvas with gold leaf gilding  
120 x 90 cm • 2017

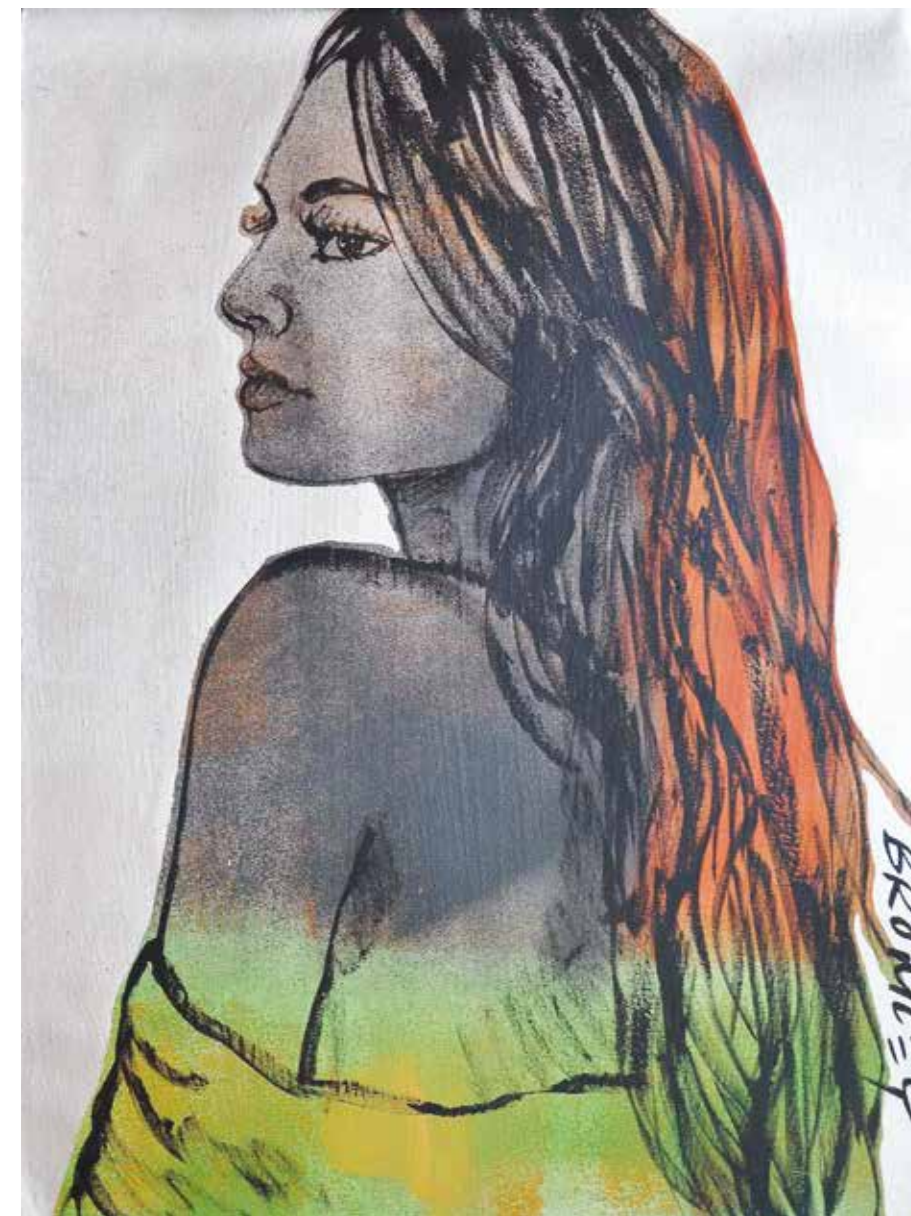


ZIPPORA  
Acrylic on canvas with gold leaf gilding  
185 x 152 cm • 2017





ALEXANDRA - LA GIRLS SERIES  
 Acrylic on canvas with gold leaf gilding  
 120 x 90 cm • 2017



MALLORY  
 Acrylic on canvas with metal leaf gilding  
 100 x 75 cm • 2017





INDIAN

Acrylic on canvas with metal leaf gilding  
122 x 91 cm • 2017



HARLEY

Acrylic on canvas with gold leaf gilding  
122 x 91 cm • 2017



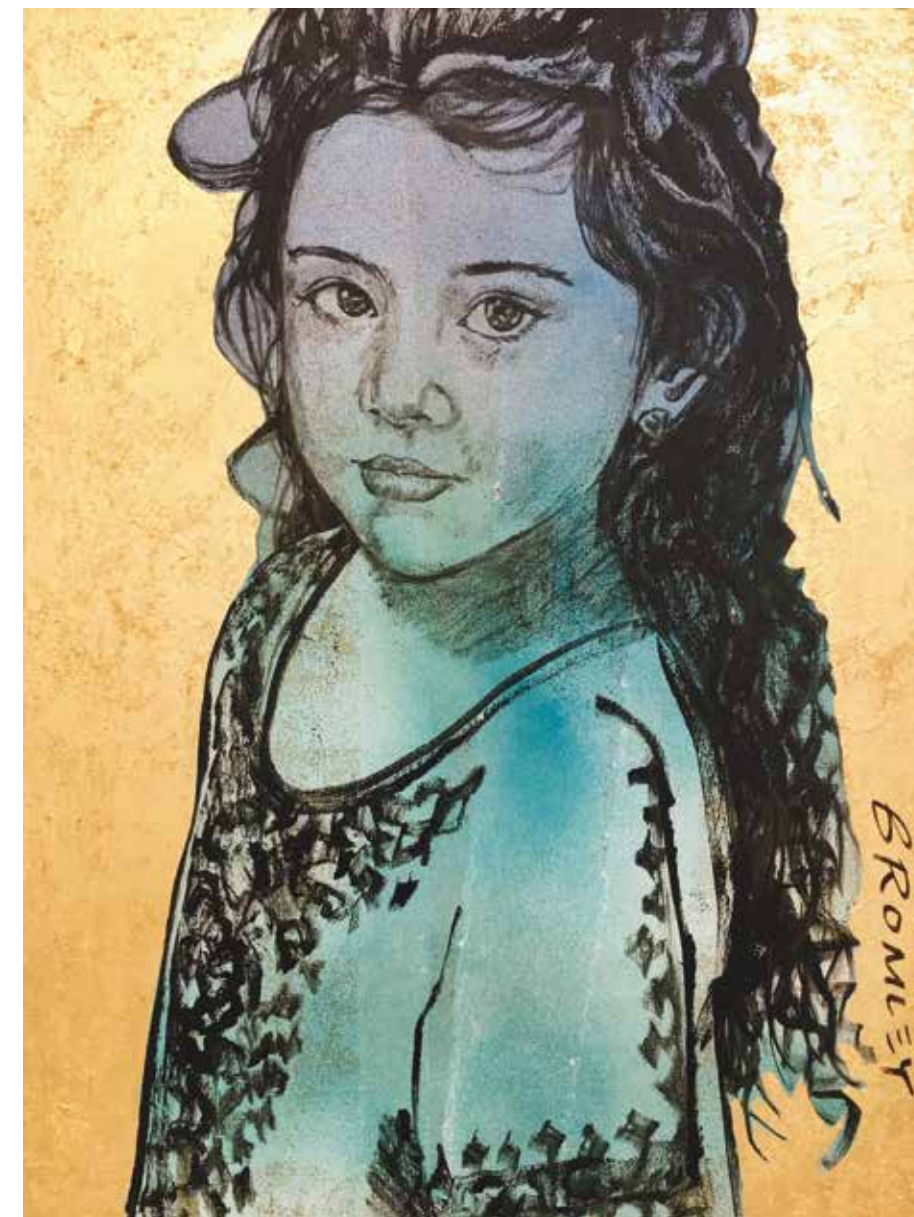


## *Children*





NAEEMA  
Mixed media and gold leaf on canvas  
122 x 91 cm • 2017



ARISSA  
Mixed media and gold leaf on canvas  
122 x 91 cm • 2017





THE YOUNG ARTIST  
Mixed media on canvas  
152 x 122 cm • 2017



THE YOUNG AUTHOR  
Mixed media on canvas  
152 x 122 cm • 2017





CHERUB'S DAY OUT  
Mixed media on canvas  
61 x 91 cm • 2017



OVER THE FENCE  
Unique state print, acrylic on 320 gsm Eterna art paper  
85 x 61cm • 2017



OVER THE FENCE  
Unique state print,  
acrylic on 320 gsm Eterna art paper  
61 x 85 cm • 2017



THE THINKER  
Gouache on  
French hand made artist paper  
30 x 44 cm • 2017



Left : DOODLING  
Gouache on French hand made artist paper  
44 x 30 cm • 2017

Right : BOXING BOY  
Gouache and acrylic on French hand made artist paper  
34.5 x 26.5 cm • 2017





Left : GO FORTH

Gouache and watercolour on French hand made artist paper  
34 x 26.5 cm • 2017



Right : BUNNY

Gouache and watercolour on French hand made artist paper  
34 x 26 cm • 2017



DREAMTIME

Gouache and acrylic on  
French hand made artist paper  
27 x 34 cm • 2017



BOY IN HAT

Acrylic on canvas  
5 x 3.4 cm

Collection of Nikhil Thanasan



BOY PIRATE I

Acrylic on canvas  
5 x 5 cm

Collection of Nikhita Thanasan



BOY PIRATE II

Acrylic on canvas  
5 x 3.9 cm

Collection of Nikheisha Thanasan





*World*



SPRING BUTTERFLIES I  
Acrylic on canvas with gold leaf gilding  
152 x 185 cm • 2017







KALEIDOSCOPIC BUTTERFLIES  
Acrylic on canvas with metal leaf gilding  
122 x 152 cm • 2017



SUMMER BUTTERFLIES  
Acrylic on canvas with gold leaf gilding  
122 x 152 • 2017





TAKE FLIGHT  
Mixed media on canvas  
122 x 152 cm • 2017



DAISY CHAIN  
Mixed media on canvas  
122 x 152 • 2017





DAISY CHAIN II  
Mixed media on canvas  
122 x 152 cm • 2017



DAISY CHAIN III  
Mixed media on canvas  
122 x 152 • 2017



BUTTERFLIES  
Acrylic on canvas with metal leaf gilding  
91 x 183 cm • 2015





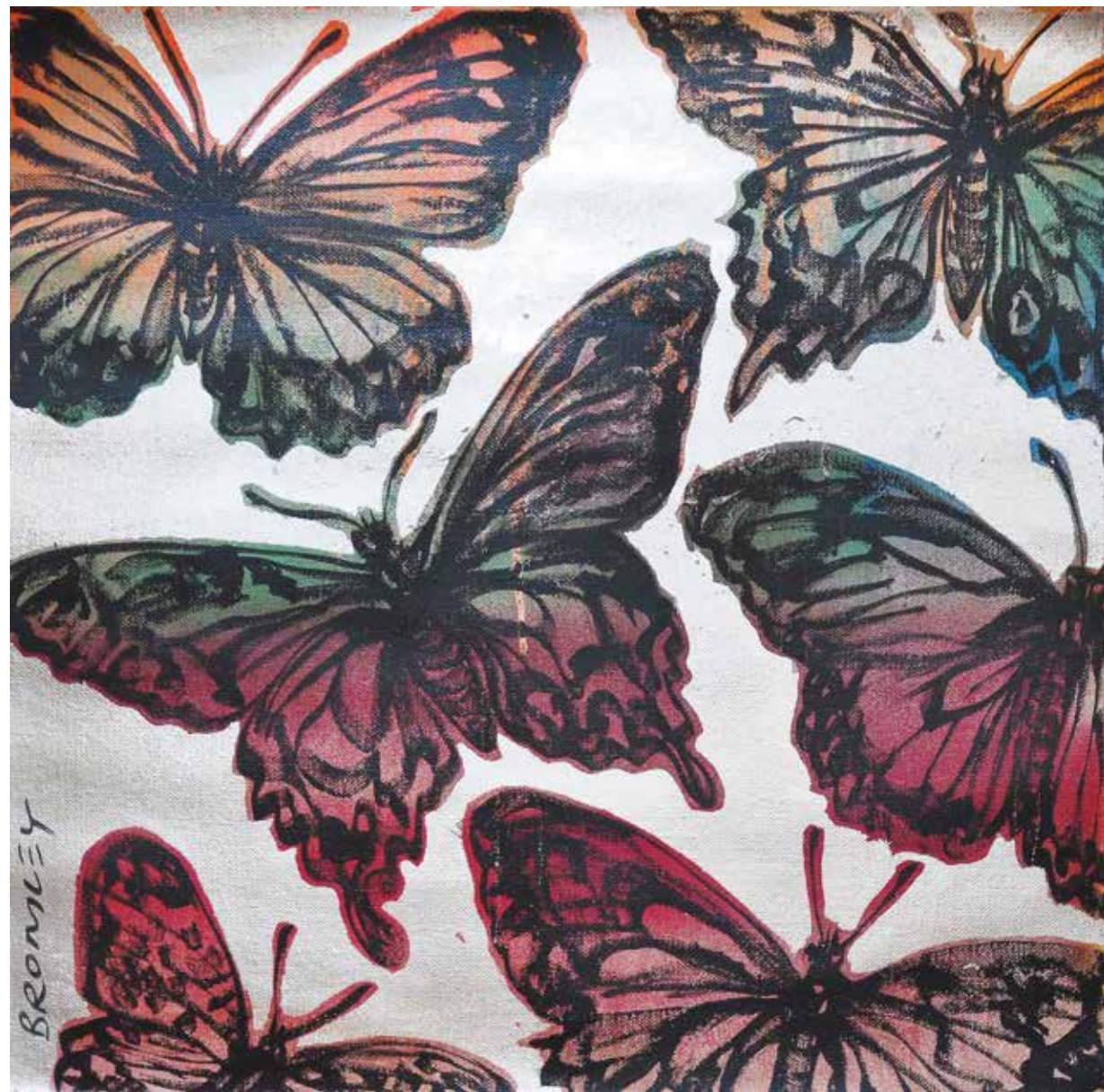


TAKE FLIGHT V  
Thick canvas  
101 x 101 cm • 2017



TAKE FLIGHT VI  
Thick canvas  
101 x 101 cm • 2017





TAKE FLIGHT VII  
Thick canvas  
101 x 101 cm • 2017



BIRDS  
Thick canvas  
101 x 101 cm • 2017





WINTER BUTTERFLIES  
Acrylic on canvas with metal leaf gilding  
61 x 91 cm • 2017



SUMMER BUTTERFLIES  
Acrylic on canvas with metal leaf gilding  
61 x 91 cm • 2017





KALEIDOSCOPIC BUTTERFLIES II

Mixed media on canvas

61 x 91 cm • 2017



HOP HOP HOP

Acrylic on canvas with metal leaf gilding

61 x 91 cm • 2017





I THINK BUTTERFLIES ARE BEAUTIFUL I  
Mixed media and gold leaf on canvas  
55 x 82 cm • 2015



I THINK BUTTERFLIES ARE BEAUTIFUL II  
Mixed media and gold leaf on canvas  
55 x 82 cm • 2015



TAKE FLIGHT III  
Acrylic on canvas with metal leaf gilding  
36 x 46 cm • 2017



TAKE FLIGHT IV  
Acrylic on canvas with gold leaf gilding  
36 x 46 cm • 2017



BEST FOOT FORWARD  
Acrylic on canvas with metal leaf gilding  
36 x 46 cm • 2017



A GOOD DROP  
Mixed media on canvas  
36 x 46 cm • 2017







Left : DRAGONFLIES  
Acrylic on canvas with gold leaf gilding  
50 x 40 cm • 2017



Right : TAKE FLIGHT II  
Mixed media on canvas  
20 x 20 cm • 2017

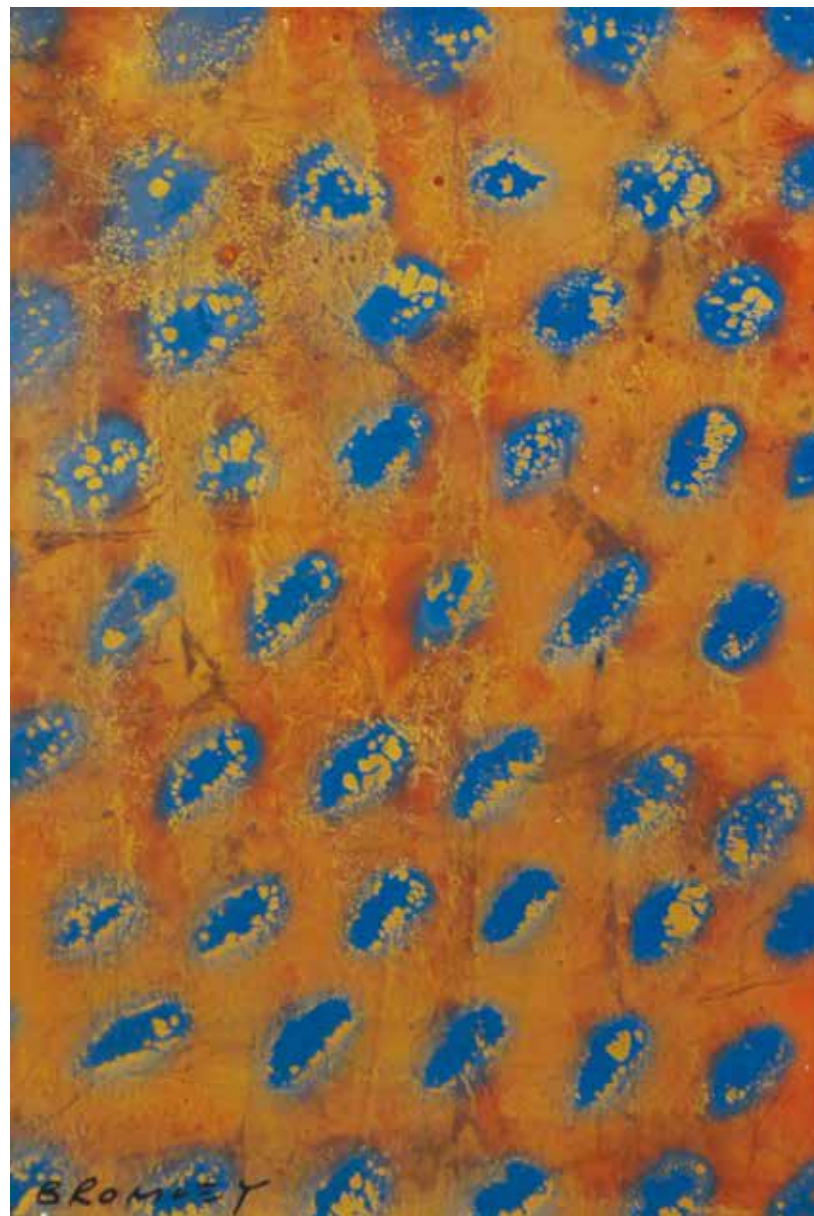


TAKE FLIGHT  
Limited edition Giclee print, Edition of 60  
50 x 133 cm • 2017



HORSES  
Limited edition Giclee print, Edition of 60  
50 x 133 cm • 2017





MORSE CODE II - BLUE AND ORANGE

Mixed media on canvas

91 x 61 cm • 2017



MORSE CODE III - BLUE AND SILVER

Mixed media on canvas

91 x 61 cm • 2017





CHATTER BIRD  
Cast bronze sculpture, Artist Proof  
19 x 25 x 12 cm • 2016



LEAP FROG - BOY OVER GIRL  
Cast bronze sculpture, Artist Proof  
43 x 27 x 12 cm • 2013





CAUGHT OUT  
Cast bronze sculpture, Edition 9 of 30  
35 x 14 x 12 cm



MARCHING ON  
Cast bronze sculpture, Edition 8 of 30  
38 x 13 x 17 cm





LEAP FROG - BOY OVER BOY  
Cast bronze sculpture, Edition 5 of 35  
37 x 30 x 22 cm



LEAP FROG - BOY OVER GIRL  
Cast bronze sculpture, Edition 5 of 35  
42 x 26 x 17 cm





BATH TIME

Cast bronze sculpture, Edition 10 of 30

36 x 25 x 25 cm



**Concept and Creative Director**  
Datuk Gary Thanasan

**Project Manager**  
Lydia Teoh

**Project Coordinator**  
Shamila Angoosamy

**Writer**  
KL Lifestyle Editorial Team

**Designer**  
Lydia Teoh

**Photography**  
Eyda Faidah

**Printed by**  
Pringard Trading

**Published by**  
Mediate Communications Sdn Bhd  
31 Jalan Utara, 46200 Petaling Jaya, Sleangor, Malaysia  
T: +603 7932 0668 | F: +603 7955 0168  
Website: [www.kl-lifestyle.com.my](http://www.kl-lifestyle.com.my)

Published on the occasion of the exhibition “The World of David Bromley”,  
8 August - 30 August 2017, organised by KL Lifestyle Art Space.



Photograph by Max Tino



Photograph by Shelby Chai



Photograph by Samantha Khoo



Photograph by Joe PRC International



Photograph by Shelby Chai



Photograph by Kaer Azami





**ABDUL LATIFF MOHIDIN** Siri Pago-Pago, 1963 Oil on canvas 87 x 78 cm  
**PRIVATE COLLECTION OF DATUK GARY THANASAN**  
 (Formerly in the Private Collection of Datuk Syed Ahmad Jamal)

# 6 KLAS CELEBRATES ASTOUNDING YEARS

**KLAS ART AUCTION**  
 MALAYSIAN MODERN & CONTEMPORARY ART



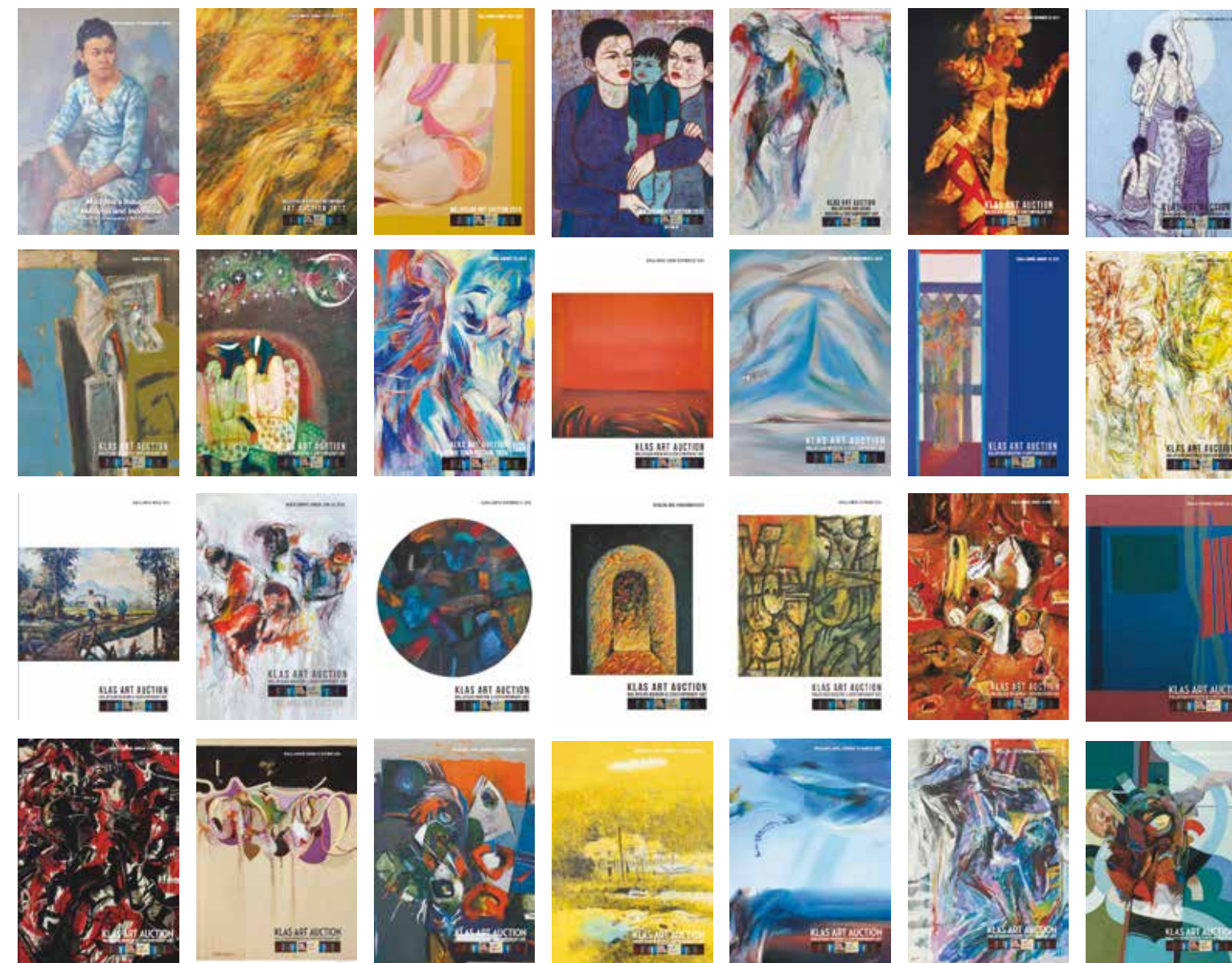
## KL LIFESTYLE ART SPACE EXHIBITION

FEBRUARY 2011 - FEBRUARY 2014



## KLAS ART AUCTION

SEPTEMBER 2012 - JULY 2017





CONNECTING YOU TO THE WORLD

In our continual quest to offer you world-class homes and exciting real estate investment opportunities, EcoWorld journeys overseas to bring you a select choice of bespoke residential schemes in the UK and Australia. Three distinctive waterside developments in what must be the world's greatest city – LONDON, and antipodean gems in two of the world's most liveable cities – MELBOURNE and SYDNEY.

KUALA LUMPUR

2, Jalan Hang Tuah  
55100 Kuala Lumpur  
+603 2116 2525  
ewi@ecoworldinternational.com

SINGAPORE

8, Marina View  
#15-07B, Asia Square Tower 1  
Singapore 018960  
+65 6235 2525  
Sg-gallery@ecoworld.my

SYDNEY

Suite 1701, 99 Mount Street  
North Sydney  
New South Wales 2060  
+612 9689 2525  
sydney@ecoworldinternational.com

MELBOURNE

Ground Floor, 9-11 Claremont St  
South Yarra  
Victoria 3141  
+613-9826 2500  
melbourne@ecoworldinternational.com

LONDON

3rd Floor, News Building  
3 London Bridge Street  
London SE1 9SG, UK  
+44(2)2037436143  
corp@ecoworldinternational.com



# THE WORLD IS OUR CANVAS

“With every brushstroke and every pencil line, our designers have created award-winning *urban mosaics* with boldly coloured brick facades and masterful renditions of light, texture and forms. From London to Australia and back, we delight in bringing to you homes that are truly works of art”.



Parramatta, Sydney



South Yarra, Melbourne  
(by Eco World - Salcon Y1 Pty Ltd)



Marsh Wall E14 (next to Canary Wharf)



Orchard Place E14, East London



Embassy Gardens  
Nine Elms Lane SW8, Central London

**ECOWORLD**  
INTERNATIONAL  
CREATING TOMORROW & BEYOND  
[www.ecoworldinternational.com](http://www.ecoworldinternational.com)

## KUALA LUMPUR

2, Jalan Hang Tuah  
65100 Kuala Lumpur  
+603 2116 2525  
[ewi@ecoworldinternational.com](mailto:ewi@ecoworldinternational.com)

## SINGAPORE

8, Marina View  
#15-07B, Asia Square Tower 1  
Singapore 018960  
+65 6235 2525  
[Sg-gallery@ecoworld.my](mailto:Sg-gallery@ecoworld.my)

## SYDNEY

Suite 1701, 99 Mount Street  
North Sydney  
New South Wales 2060  
+612 9689 2525  
[sydney@ecoworldinternational.com](mailto:sydney@ecoworldinternational.com)

## MELBOURNE

Ground Floor, 9-11 Claremont St  
South Yarra  
Victoria 3141  
+613-9826 2500  
[melbourne@ecoworldinternational.com](mailto:melbourne@ecoworldinternational.com)

## LONDON

3rd Floor, News Building  
3 London Bridge Street  
London SE1 9SG, UK  
+44(2)2037436143  
[corp@ecoworldinternational.com](mailto:corp@ecoworldinternational.com)

LONDON PROJECTS:

**ECOWORLD** **ballymore.**  
CREATING TOMORROW & BEYOND

A JOINT DEVELOPMENT



# WELCOME TO ECOWORLD

Visit us at EcoWorld International, 2 Jalan Hang Tuah, 55100 Kuala Lumpur to discover more about our developments in London, Sydney and Melbourne

Our sales gallery is open on weekdays (9am-6pm), weekends and public holidays (10am-6pm)



KUALA LUMPUR	SINGAPORE	SYDNEY	MELBOURNE	LONDON
2, Jalan Hang Tuah 55100 Kuala Lumpur  +603 2116 2525 ewi@ecoworldinternational.com	8, Marina View #15-07B, Asia Square Tower 1 Singapore 018960  +65 6235 2525 Sg-gallery@ecoworld.my	Suite 1701, 99 Mount Street North Sydney New South Wales 2060  +612 9689 2525 sydney@ecoworldinternational.com	Ground Floor, 9-11 Claremont St South Yarra Victoria 3141  +613-9826 2500 melbourne@ecoworldinternational.com	3rd Floor, News Building 3 London Bridge Street London SE1 9SG, UK  +44(2)2037436143 corp@ecoworldinternational.com



## ABOUT KL LIFESTYLE ART SPACE

Founded in 2011, KL Lifestyle Art Space (KLAS) is a private gallery owned by Dato’ Gary Thanasan and is currently located at 31, Jalan Utara, Petaling Jaya. KLAS’s latest and purpose built new gallery in Petaling Jaya has high visibility and accessibility at this prime address in the Klang Valley.

KLAS’s chief mission is to offer another avenue for the local public and visitors to view Modern and Contemporary artworks primarily from Malaysia and other regions beyond the institutions and existing art spaces. This new location in Petaling Jaya has undoubtedly encouraged many walk-ins, thereby raising public interest in Malaysian modern and contemporary art.

The Malaysian visual art scene is growing rapidly, and we find this pace very encouraging. Currently, we see greater interest for art works by the Malaysian masters and senior artists alongside emerging contemporary artists from our neighbouring countries, with focus on Singapore and Indonesia. However, we at KLAS believe more needs to be done to propel the awareness and interest for Malaysian art to the same heights as many of our Asian neighbours, such as China, India, and even Thailand. It is KLAS’ goal to bring the country’s visual art scene one step closer to — indeed, even, one step ahead of — those of our neighbours, and we have been determined to do so. Our Being, a solo exhibition by Jeihan Sukmantoro in 2011, a highly reputable senior artist from Bandung, Indonesia, marks KLAS’s foray into promoting artworks by renowned artists from around Southeast Asia. Today, we have yet another important contemporary artist, for the first time, from Australia.

As a commercial gallery and auction house, we hope to encourage a secondary market for Malaysian art, particularly for modern and pioneer works from established senior artists and masters from Malaysia. These mostly constitute artworks created up till the 1960s and many will be surprised to know that these artworks, as well as artworks by these exceptional artists, are still affordable. With this vision, in September 2012, KLAS embarked into hosting its inaugural Malaysian and Indonesian modern & contemporary art auction which received overwhelming response from collectors and institutions. This bold move has enabled us to further strengthen our position as a prime mover of Malaysian art within a short span of six years of our existence in the fine art business.

KLAS also accepts consignments from artists or individual collectors, thereby making their artworks available to interested parties via our gallery or auctions which are held once every other month. This will undoubtedly give the opportunity for serious collectors to fill the void in their collection by acquiring those hard-to-secure pieces from specific periods, series or individuals. In the process, this publicity will draw in the interest from fresh, young collectors.

All art collections have to begin somewhere. What matters most is the steps that follow and, as all serious collectors know, it is important to deal with a reputable source. KLAS offers an assurance of legitimacy for all artworks that pass through our doors.

KLAS has its presence on the internet too, a comprehensive website at [www.kl-lifestyle.com.my](http://www.kl-lifestyle.com.my) that details previous, on-going exhibitions and forthcoming auctions. The website also includes a stockroom with an inventory of artworks for sale and an art sales index which is updated with the last transacted price of artworks sold in our auctions. The latest auction results are updated here, and this works well as a guide for collectors to monitor prices of artworks sold in KLAS auctions.

We look forward to seeing you at KL Lifestyle Art Space.



## SPECIAL SHOWCASE



**DAVID BROMLEY** Zippora, 2017  
Acrylic on canvas with gold leaf gilding 183 x 152 cm

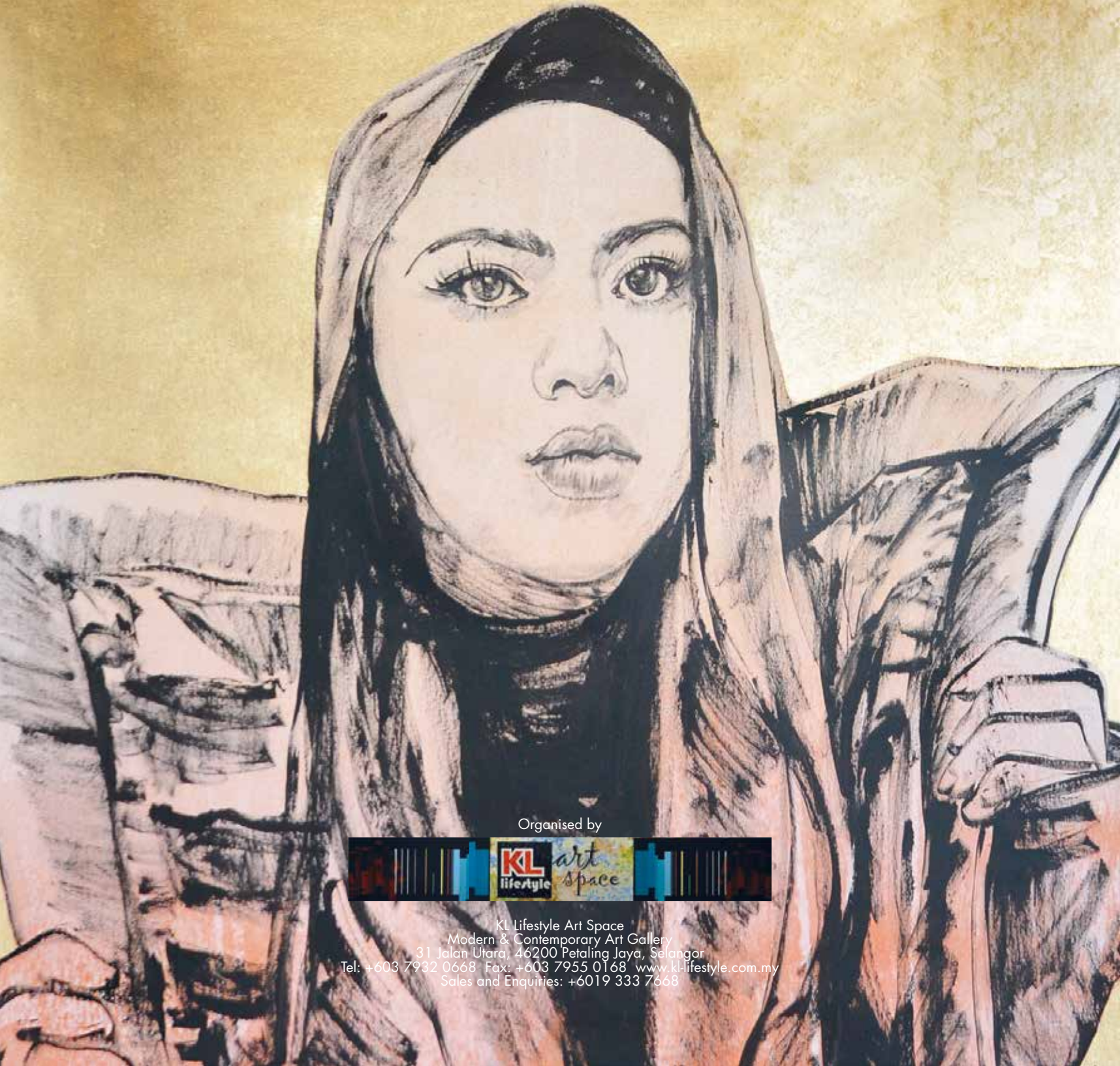
## The World of **David Bromley** SOLO EXHIBITION

12 SEPTEMBER - 24 SEPTEMBER 2017  
ECO WORLD INTERNATIONAL, JALAN HANG TUAH









Organised by



KL Lifestyle Art Space  
Modern & Contemporary Art Gallery  
31 Jalan Utara, 46200 Petaling Jaya, Selangor  
Tel: +603 7932 0668 Fax: +603 7955 0168 [www.kl-lifestyle.com.my](http://www.kl-lifestyle.com.my)  
Sales and Enquiries: +6019 333 7668